

DS-K2604-G

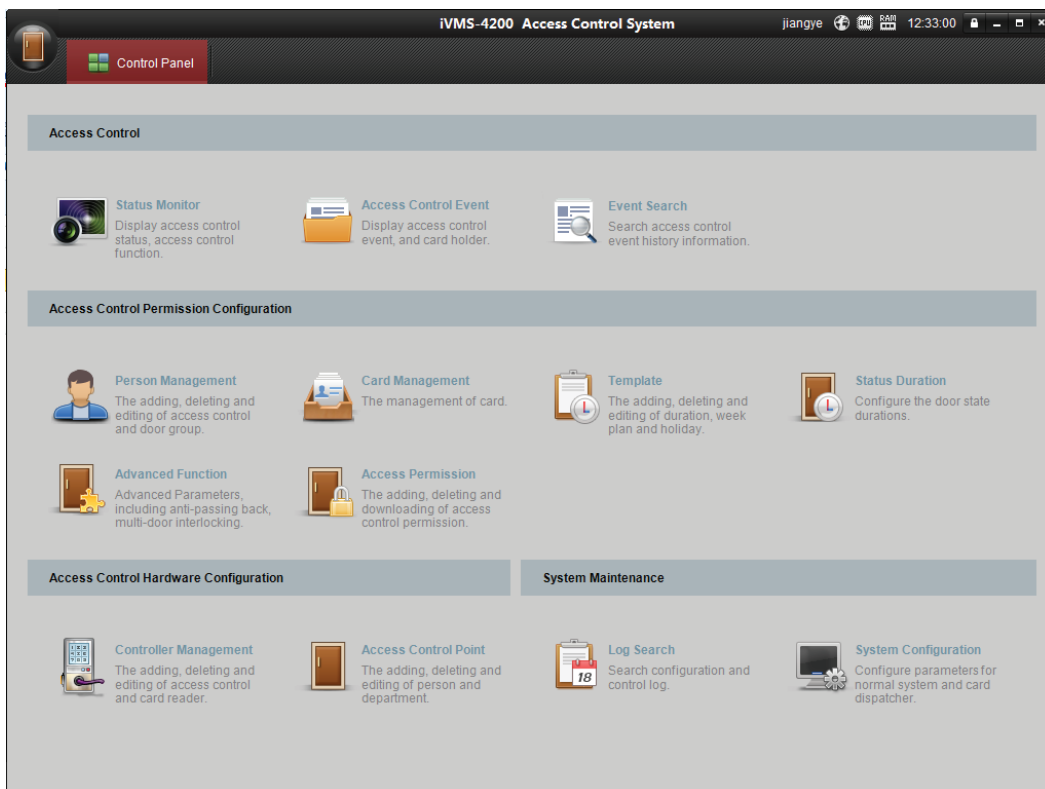
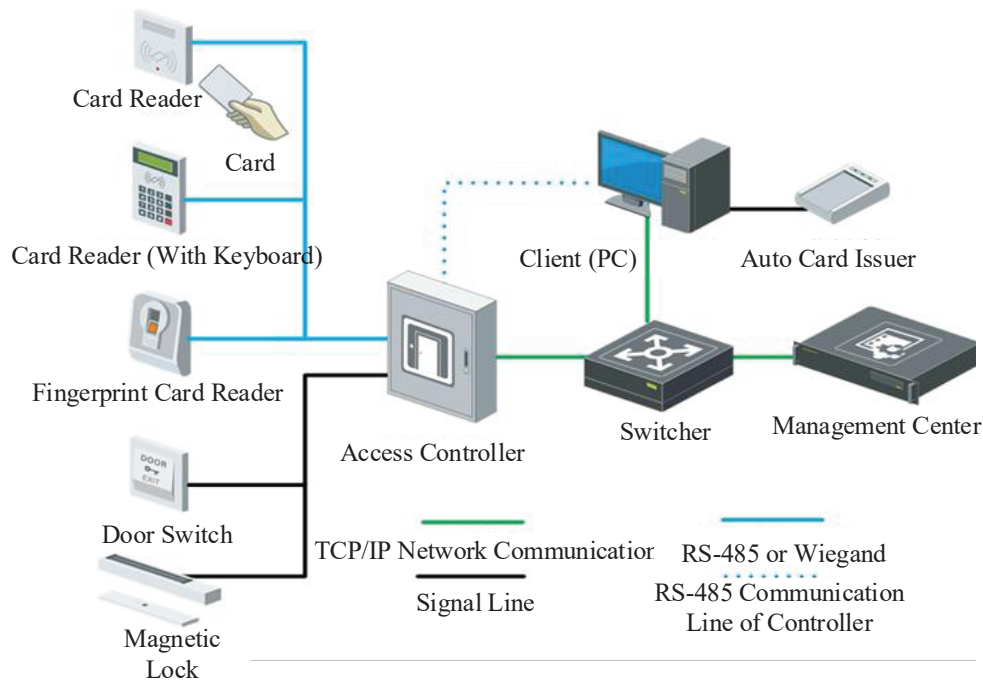
Network Access Controller



MAIN FEATURES

- 32-bit high-speed processor;
- TCP/IP network communication, with self-adaptive network interface. The communication data is encrypted to ensure information security;
- The recognition and storage of card number with maximum 20 digits;
- Massive storage with 100,000 (can be expanded to 200,000) cards information and 300,000 (can be expanded to 600,000) access control events;
- Supports multi-door interlocking function (DS-K2602-G, and DS-K2604-G), anti-pass back function, multi-card function, first card function, super card and super password function.
- Online upgrade function and online remote control of the doors;
- Supports alarm event upload (including tamper-proof alarm, unsecured door alarm, forced entry alarm, delayed door alarm, duress card and code alarm, blacklist alarm and alarm for invalid card swiping attempts alarm);
- Short circuit attempts alarm and open circuit attempts alarm;
- Supports zone alarm input;
- Supports RS485 interface and Wiegand interface for accessing card reader. Wiegand interface supports W26/W34 and is seamlessly compatible with third-party card reader with Wiegand interface;
- Supports various card types such as normal/ disabled/ blacklist/ patrol/ guest/ duress/super card, etc.;
- Supports standby battery;
- Watchdog for device running status detection;
- Data can be permanently saved when the access controller is powered off.

TYPICAL APPLICATION



Specifications

DS-K2604-G	
Working Voltage	DC 12V/1A
Power Dissipation (with Load)	≤100W
Processor	32-bit
Capacity	16M
Uplink Communication Interface	TCP/IP Network Interface and RS-485 Interface
Downlink Communication Interface	RS-485 and Wiegand (w26/w34)
Storage	cards information: 100,000(200,000 expandable) access control events: 300,000 (600,000 expandable)
LED Indicator	Power Supply Status, Communication Status, Working Status
Built-in Clock	YES
Accessible Card Readerdisk	4Card Readers (RS485 Interface)and 4Card Readers (Wiegand Interface) Connectable
Input Interface	Alarm Input×4, Door Magnetic×4, Door Switch×4, Case Input×8, Tamper-proof ×1
Output Interface	Door Switch Relay×4, Alarm Relay×4
Working Temperature	-20°Cto +65°C (-4°F to +149°)